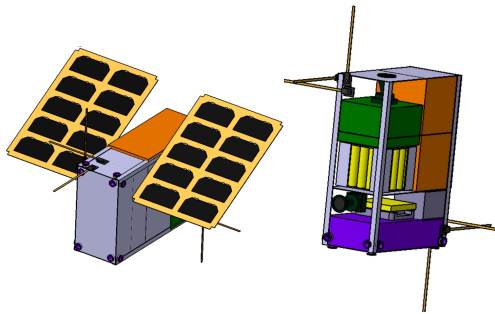


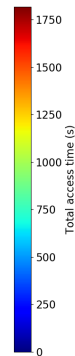
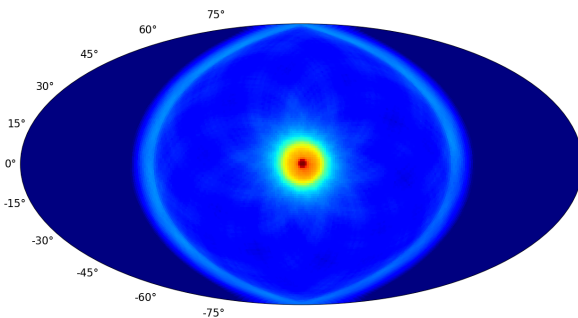
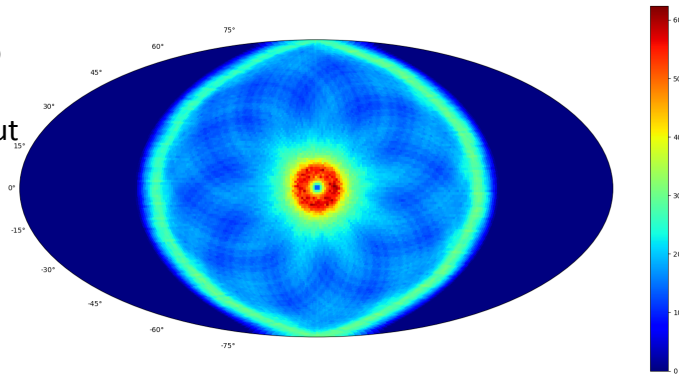
LCS: Feasibility Study for a Calibration Satellite to enhance LiteBIRD science

Francisco J. Casas, Enrique Martínez-González, R. Belén Barreiro, P. Vielva (IFCA)

Juan Bermejo-Ballesteros, Sergio García-González, Javier Cubas, Ángel Sanz Adrés (IDR/UPM)



Percentage of viewed detectors according to the position of LCS relative to LB throughout 12 hours.



Total access time according to the position of LCS relative to LB throughout 12 hours.

